

Balloon
Pos.
Qty.

B

C

D

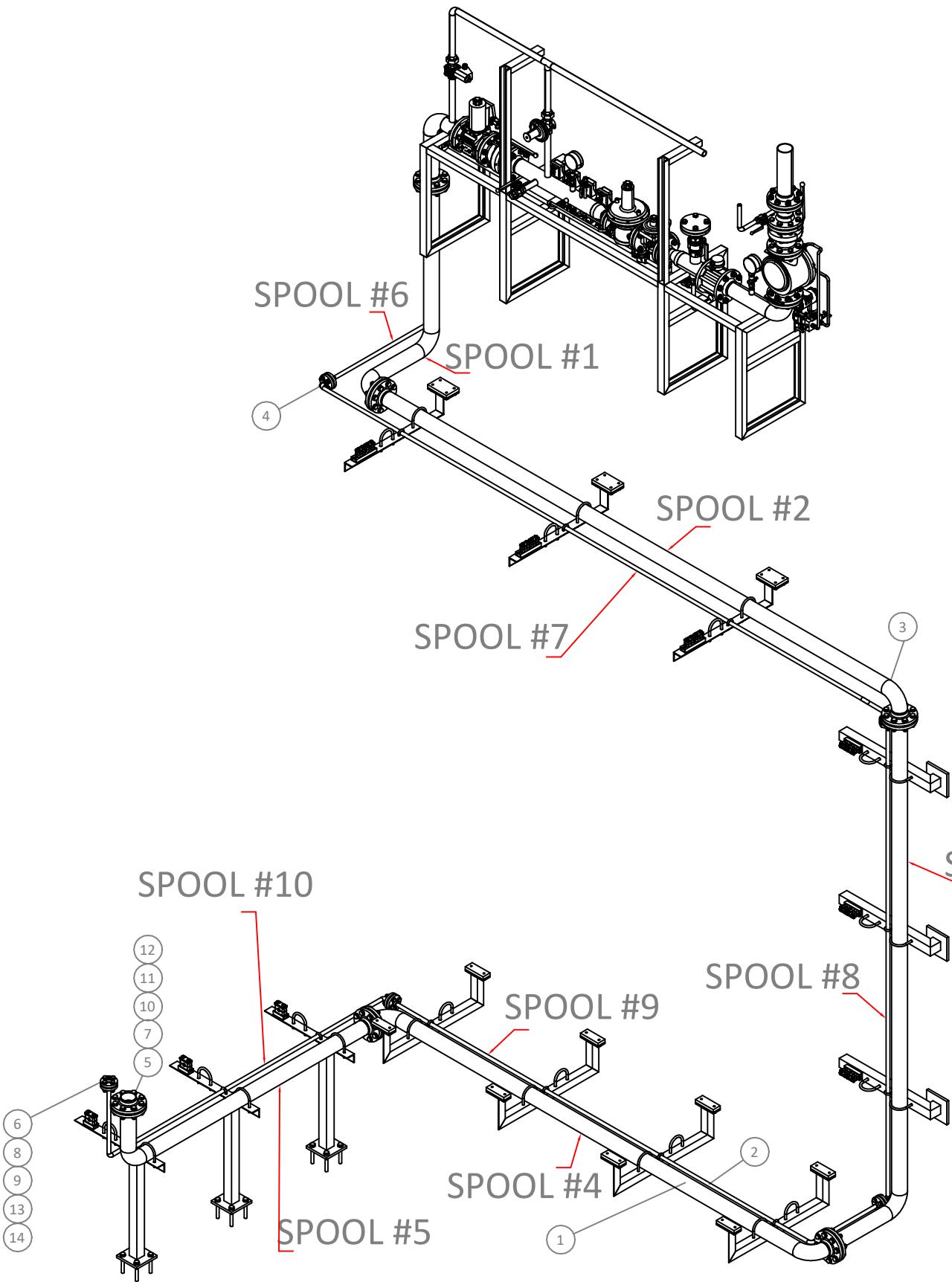
E

F

G

Before manufacturing this part, carefully review the drawing and clarify all doubts.

This drawing belongs to IFI Industrial Furnaces INSERTEC and must not be used or reproduced without authorization.





Nº	MATERIAL	QTY
1	PIPE DN80 THICKNESS 3.2MMS CS P235TR1 EN10216-1 (SEAMLESS)	17m
2	PIPE DN15 THICKNESS 2MMS CS P235TR1 EN10216-1 (SEAMLESS)	17m
3	ELBOW 90° DN80 THICKNESS 3.2MMS RADIUS 3D BW CS P265GH EN10253-1	7
4	ELBOW 90° DN15 THICKNESS 2MMS RADIUS 3D BW CS P265GH EN10253-1	7
5	WN FLANGE DN80 PN16 BW P235TR1 EN1092-1 TYPE 11 (DIN2633)	10
6	WN FLANGE DN15 PN16 BW P235TR1 EN1092-1 TYPE 11 (DIN2633)	10
7	GASKET DN80 PN16 3MMS DIN2690 KLINGERSIL C-4430	6
8	GASKET DN15 PN16 3MMS DIN2690 KLINGERSIL C-4430	6
9	BOLTS M12X55 8.8 DIN933 CS ZN	24
10	BOLTS M16X60 8.8 DIN933 CS ZN	48
11	NUTS M16 8 DIN934 CS ZN	48
12	GROWER WASHERS M16 DIN127 CS ZN	96
13	NUTS M12 8 DIN934 CS ZN	24
14	GROWER WASHERS M16 DIN127 CS ZN	48

UNSPECIFIED WELDS:

70% JOINT WITHOUT BEVEL 40% JOINT WITH BEVEL 70% 50-100 REINFORCEMENT JOINT 80% PIPE/PROFILE JOINT 40% PLATE SPLICING

Note: Percentage (%) of the weld in relation to the smallest section of the weld joint.

Non-individual tolerances according to DIN 7168.						Drawn 3D: Brajan IDDTEK.		
Angular Tolerance	Nominal Dimension	0-10	10-50	50-120	120-400	>400	Drawn 2D: Brajan IDDTEK.	
	Angular Tolerance	±1°	±0,5°	±0,33°	±0,16°	±0,083°	Date: 1/12/2025	1st Dihedral 
Linear Tolerance	Nominal Dimension	0-6	6-30	30-120	120-315	315-1000		
	Linear Tolerance	±0,1	±0,2	±0,3	±0,5	±0,8	±1,2	

Designation:
Natural Gas Route

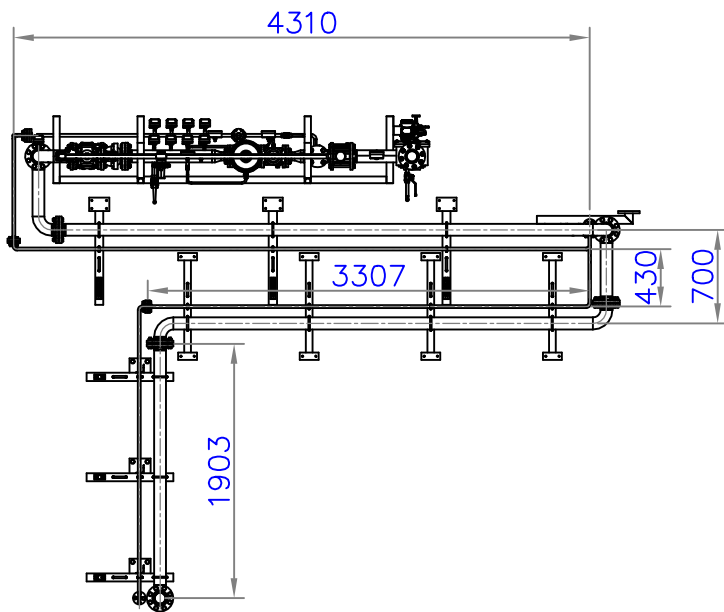
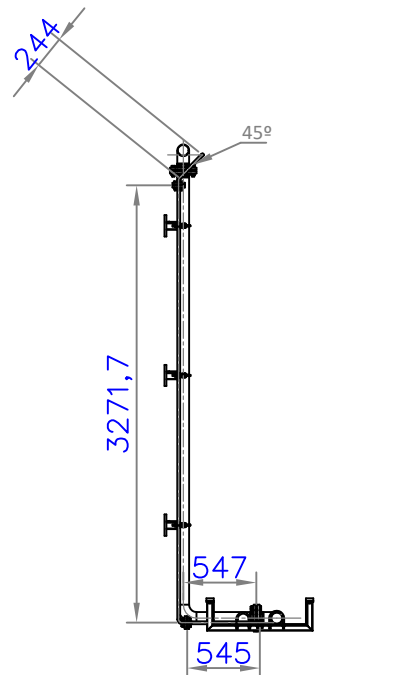
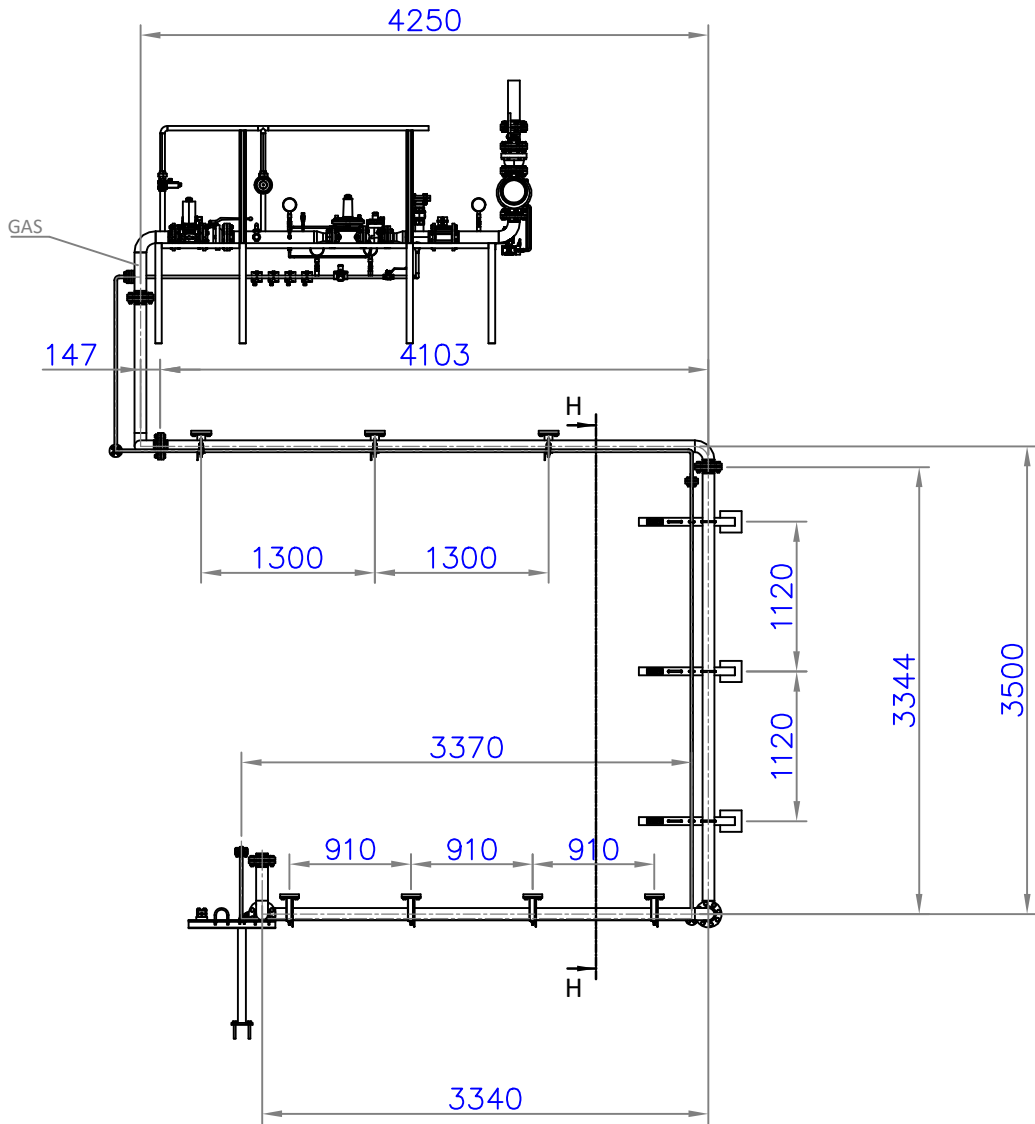
Equipment:
TMT (FVRB-2,7-25)

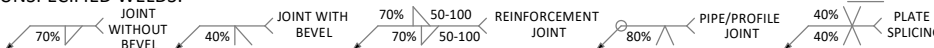

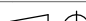
Rev. **B**

Nº Drawing:
2558-3322-TMT-ESR20

Scale 1:40	Weight (kg)	Sheet 1 of 3	Format A2
---------------	-------------	-----------------	--------------

H



UNSPECIFIED WELDS:									
									
Note: Percentage (%) of the weld in relation to the smallest section of the weld joint.									
Non-individual tolerances according to DIN 7168.							Drawn 3D: Brajan IDDTEK.		
Angular Tolerance	Nominal Dimension	0-10	10-50	50-120	120-400	>400		Drawn 2D: Brajan IDDTEK.	 insertec Furnaces & Refractories
	Angular Tolerance	±1°	±0,5°	±0,33°	±0,16°	±0,083°			
Linear Tolerance	Nominal Dimension	0-6	6-30	30-120	120-315	315-1000	>1000	Date: 1/12/2025	1st Dihedral  ISO 5456-2
	Linear Tolerance	±0,1	±0,2	±0,3	±0,5	±0,8			
Designation: Natural Gas Route					Rev. B	N° Drawing: 2558-3322-TMT-ESR20			
Equipment: TMT (FVRB-2,7-25)						Scale 1:40	Weight (kg)	Sheet 2 of 3	Format A2



insertec
Furnaces & Refractories